

First Half of 2018

Written by Administrator

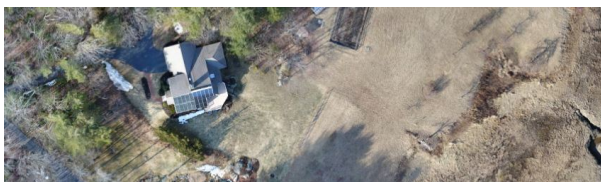
Saturday, 02 June 2018 14:26 - Last Updated Monday, 31 December 2018 16:47

July 1, 2018 - Ah, we are into summer weather after a cold, cloudy winter and chilly spring. It was feeling good until our early July heat wave.

A digital display showing the number 8809.5, representing PV output in kWhr.

PV Performance: Here's a look at our PV semi-annual array output. I'm always looking for at least 2,000 kWhrs of output during the first half of the year to keep us on track for a 4mWhr year. A little arithmetic gives me 1,994 kWhrs for this first half of 2018 (89092 - 86098) - close enough to our 2,000 kWhr goal. All I needed was a portion of one sunny day to put me over 2,000kWhrs.

Aerial View: As an FAA-certified commercial drone pilot, I enjoy viewing our property from various angles and altitudes. This is a map of our 2.4 acres adjacent to the Rachel Carson Wildlife Refuge (I wish I had mapped this at high tide). I got a slice of my neighbor's property in the process. It was late winter and the snow was melting slowly.



[Click on this link](#), then zoom in on the highlighted area to inspect the property. It was just a 5-minute drone flight to capture the stills. They were then sent to DroneDeploy.com for stitching.