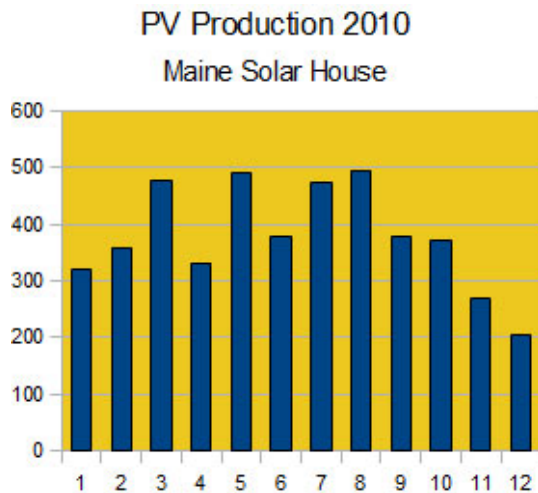


2010 Power Generation Summary

Written by Administrator

Friday, 31 December 2010 18:58 - Last Updated Saturday, 02 April 2011 05:27



Another strong year for electrical production from our 4.2 kW array: 4,229 kWhrs! That's an average of 352 kWhrs per month.

In December we generated 205 kWhrs of electricity...on the low side, but now the days are getting longer as the sun rises higher in the sky each day.

As you can see from the chart, it's not quite a bell curve but does reflect higher output in the middle months with a decided decline in the fall through the end of the year.

We're now in our 16th year and the PV array continues to deliver electricity in the 4,200 kWhr range annually. That's some 62,000 kWhrs over the first 15 years which is, as they say in Maine, 'wicked good!'